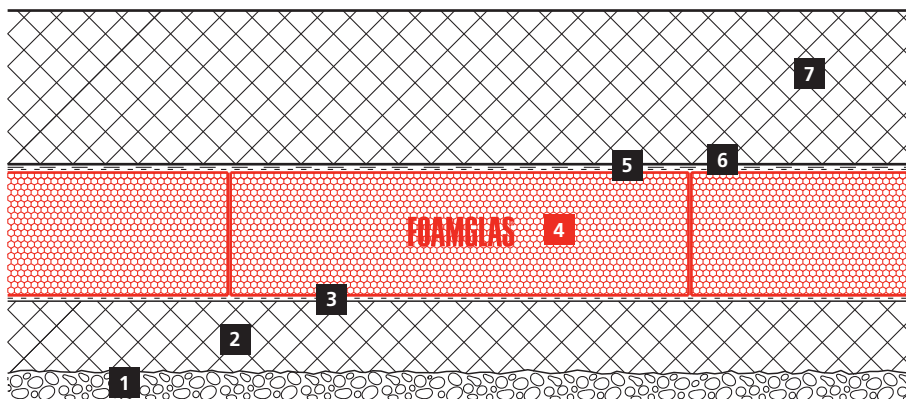


Schematic drawing



System 1.1.3

- 1 Subsoil or compacted hardcore
- 2 Blinding concrete
- 3 Primer coat
- 4 FOAMGLAS® slabs laid in hot bitumen
- 5 Top coat of hot bitumen
- 6 Separating layer
- 7 Concrete slab

FOAMGLAS® product properties

Waterproof – Resistant to vermin – High compressive strength –
Non-combustible – Impervious to water vapour – Dimensionally stable –
Acid resistant – Easily cut to shape – Ecological

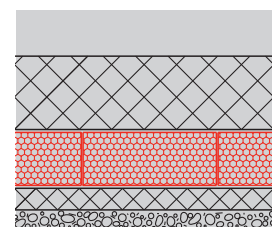
Advantages of the FOAMGLAS® system

- **Quality:** Systems with high quality materials. Quality management by systematic site inspections and professional consulting.
- **Cost efficiency:** The high durability preserves maximum value and guarantees minimal maintenance costs.
- **Sustainability:** Optimum insulation and protection against moisture for generations.
- **Safety:** Compact, fully bonded insulation system preventing damages caused by damp either through condensate or water penetration. Provides a substructure with high compressive strength and without deformation for safe structure of the building.
- **Functionality:** Insulation as well as vapour, radon and capillary barrier in one single functional layer.

Recommendations for architects

- Normally used: FOAMGLAS® slabs T4+, S3 or F, size 450/600 mm.
- Insulation thickness to meet building regulations or the project-specific U-value requirements. Please also consult our product overview. It contains information on all our products, their field of application and their specific properties.
- For the use of FOAMGLAS® under load bearing conditions, the project/structural engineer must check the admissible loads.
- **The flatness and the general conditions of the substrate are important criteria when using FOAMGLAS® (see TG1). Please contact our Technical Department to verify the criteria for the substrate.**
- **For technically correct implementation, relevant standards and guidelines must be observed.**
- **Constructions on sites with a high groundwater table or high water pressure require specialist advice. Please contact our technical staff.**

Solutions for technical details and specification clauses on request. Further proposals and solutions are available any time from our technical consultants. **Updated: November 2010.** We explicitly reserve the right to change the technical specifications. The current values can be found on our website under: www.foamglas.co.uk/building/applications



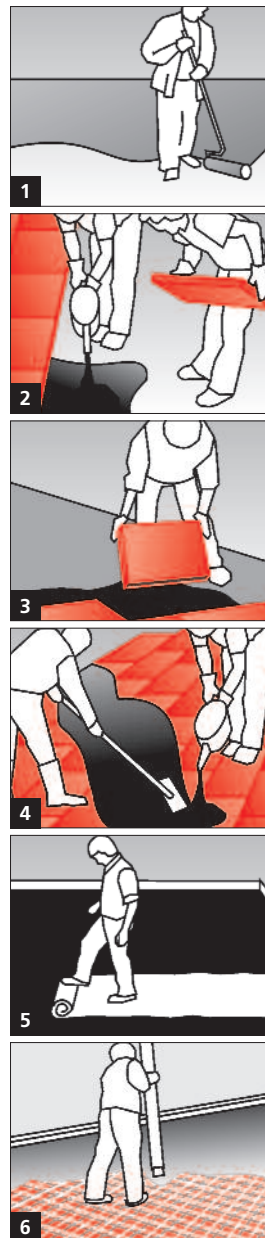
System 1.1.3

Installation instructions

- Blinding concrete for high requirements. Level off and smooth the surface.
- Apply bituminous primer coat on clean and dry blinding concrete with roller (or spraying equipment). Coverage $\sim 0.3 \text{ l/m}^2$. (1)
- Apply the FOAMGLAS® slabs fully bonded to the substrate with hot bitumen poured from a bitumen can, with staggered and bitumen-filled tight-butted joints. Coverage $\sim 5.0\text{--}7.0 \text{ kg/m}^2$, dependent on the thickness of the insulation:
Dip a short as well as a long side of the slab in the poured bitumen and press into position against already laid slabs. Surplus bitumen spilt at the side must be removed with the next slab in order to avoid irregularities. (2/3)
- Top coat of hot bitumen, coverage $\sim 2.0 \text{ kg/m}^2$. Pour the hot bitumen and spread on the surface of the FOAMGLAS® with a rubber spreader. (4)
- Apply two separating layers, joints overlapping. (5)
- To protect against high mechanical load or heavy site traffic, apply a protective layer of lean concrete mix, thickness $\sim 50 \text{ mm}$.
- Apply the reinforced concrete floor slab. Dimensioning according to the instructions of the structural engineer. (6)

Recommendations for the contractor

- The build-up and tolerances of the substrate must be in accordance with relevant standards and guidelines.
- Substrate and ambient temperature should not be below $+5^\circ \text{C}$.
- At the end of each day and on completion, a top coat must be applied immediately after the insulation has been installed.
- Adequate measures should be taken in order to avoid any risks of damage by other contractors during construction.
- **Please contact our technical consultants; they can help you by providing support or on-site assistance free of charge.**



The technical guidelines for the application and the installation of FOAMGLAS® are based on historical experience and general site practice. They do not reflect individual examples. We therefore assume no liability as to the completeness and the suitability for a specific project. Furthermore, our liability and responsibility are subject to our general conditions of sale which are not extended either by this technical data sheet nor by the consulting of our technical sales representatives.

**Pittsburgh Corning
(United Kingdom) Limited**
63 Milford Road, Reading
Berkshire RG1 8LG
Phone +44 (0)118 950 0655
Fax +44 (0)118 950 9019
info@foamglas.co.uk